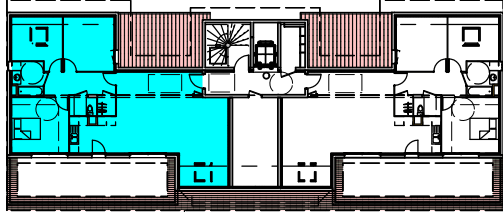


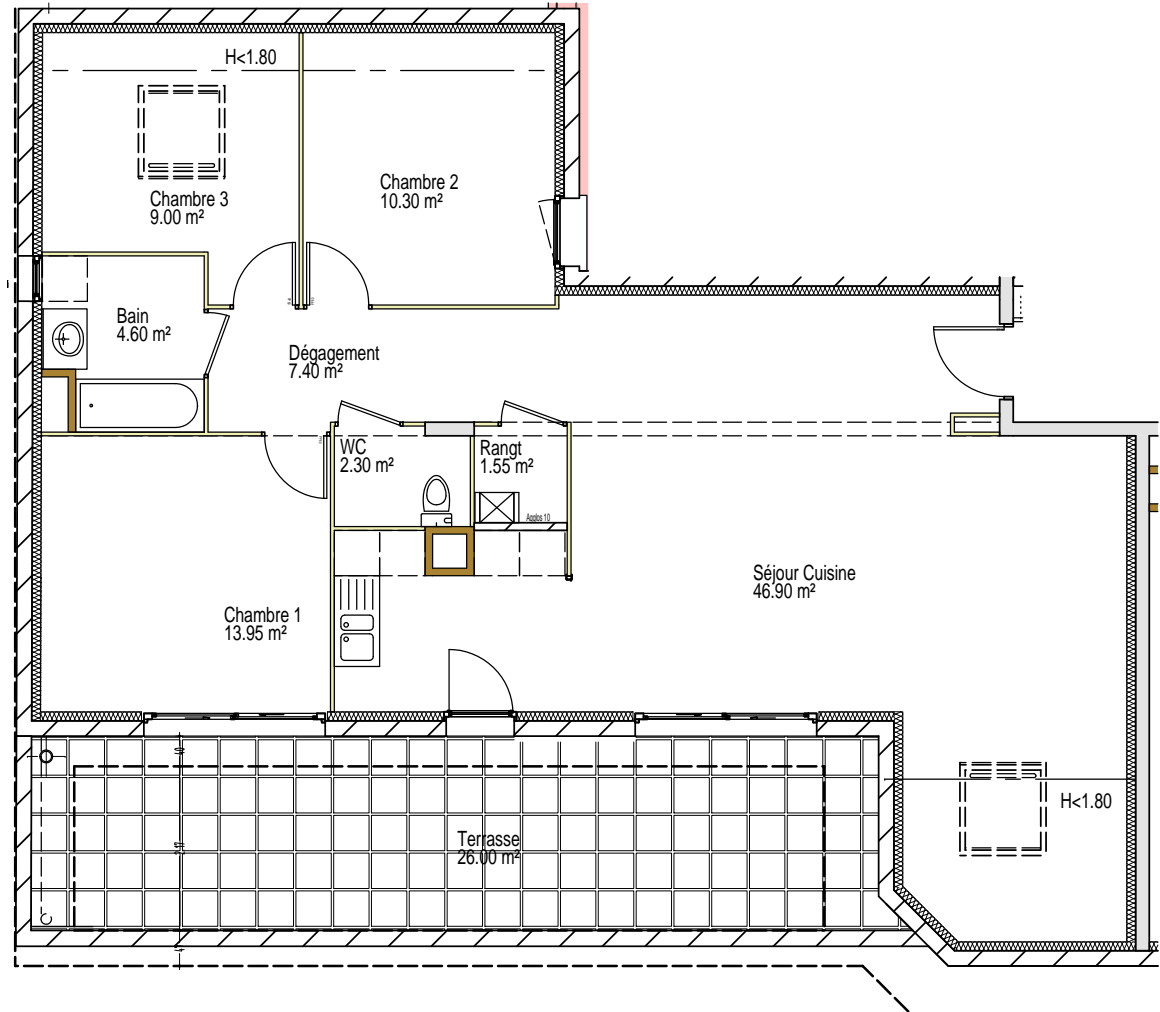
La Villa Pasteur



Etage: 4 Type: T4 n°401

SURFACES

Dégagement:	7.40 m ²
Séjour / Cuisine:	46.90 m ²
Chambre 1:	13.95 m ²
Chambre 2:	10.30 m ²
Chambre 3:	9.00 m ²
Salle de bains:	4.60 m ²
WC:	2.30 m ²
Rangement:	1.55 m ²
TOTAL:	96.00 m²
Terrasse:	26.00 m ²



Laquaz architecture
223, rue des Bécasses
38920 CROLLES
tél: 04.76.45.29.19